

City of Calhoun

2026-2027 BUDGET



downtown
CALHOUN



CALHOUN AT A GLANCE

INCORPORATION:

January 12, 1852

GOVERNMENT:

Calhoun is a Charter City operating under the Council-Administrator form of government.

POPULATION:

Approx. 20,852

AREA: 15.24 square miles

CREDIT RATING:

Aa3, high quality rating

INFRASTRUCTURE AND UTILITIES:

Streets: 106 miles

Water Mains: 880 miles

Water Delivered to Customers:
12million gallons per day

Wastewater Mains: 186.8 miles

Wastewater Treated:
5 million gallons per day

Electric Lines:

Overhead Primary: 98 miles

Underground Primary: 50 miles

Overhead Secondary: 87 miles

Underground Secondary: 61 miles

Fiber Optic Backbone: 117 miles

PRINCIPAL EMPLOYERS:

- Shaw Industries Group
- Mohawk
- Mannington Mills
- Apache mills
- Advent Health Gordon
- FieldTurfUSA
- Walmart Super Center
- Buc-ee's Georgia
- Nourison Industries
- Engineered Floors

PARKS, RECREATION, & COMMUNITY CENTERS:

Parks and Open Space: 125 acres
Recreation Center: 2 gyms; indoor walking track; community room; fitness equipment(2027)

Dog Park: 1

Disc Golf Course: 1 18 Hole course

Playgrounds: 2

Soccer Complex: 4 field complex

Tennis Center: 15 courts

Pickleball Courts: 8 courts

Baseball/Softball Fields: 9

Football Fields: 1 regulation; 1 flag field

Multi-Purpose Field: 2

Walking/Biking Trails: 4 + miles

PUBLIC SAFETY

Police Calls for Service: 32,805

Fire/Ambulance Calls for Service: 2,555

Police Vehicles: 35

Police Motorcycles: 2

Canine Units: 3

Fire Stations: 3

Fire Engines: 2

Fire Trucks: 2



Fiscal Year 2027 Challenges & Risks

Key Factors Impacting Budget Development and Service Delivery

■ ECONOMIC PRESSURES

Inflation and construction cost volatility

■ PUBLIC SAFETY

Recruitment and retention challenges

■ WORKFORCE

Competition for entry-level and skilled employees

■ PERSONNEL COSTS

Wages, health insurance, retirement, and labor market pressures

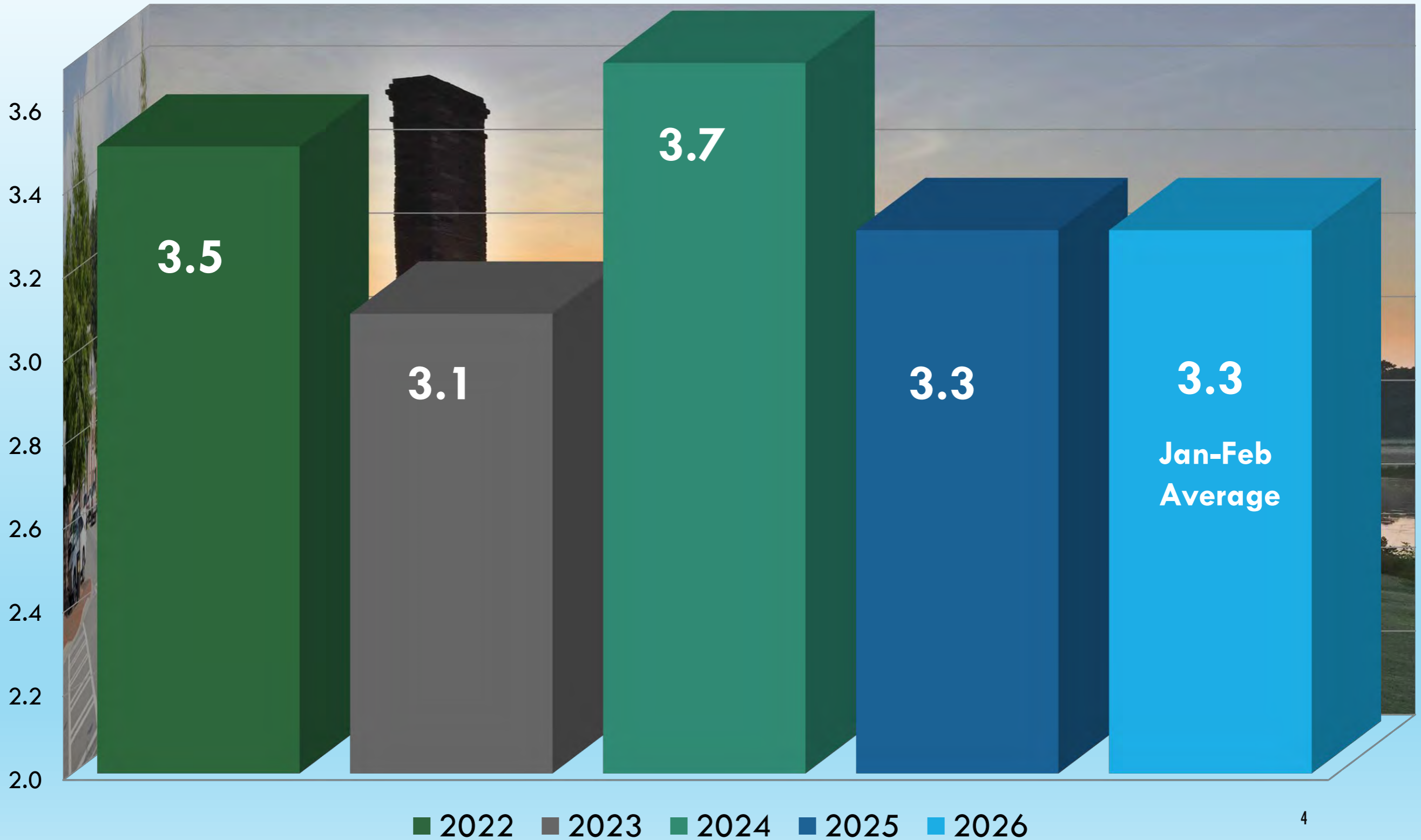
■ INFRASTRUCTURE

Utility expansion and capacity needs

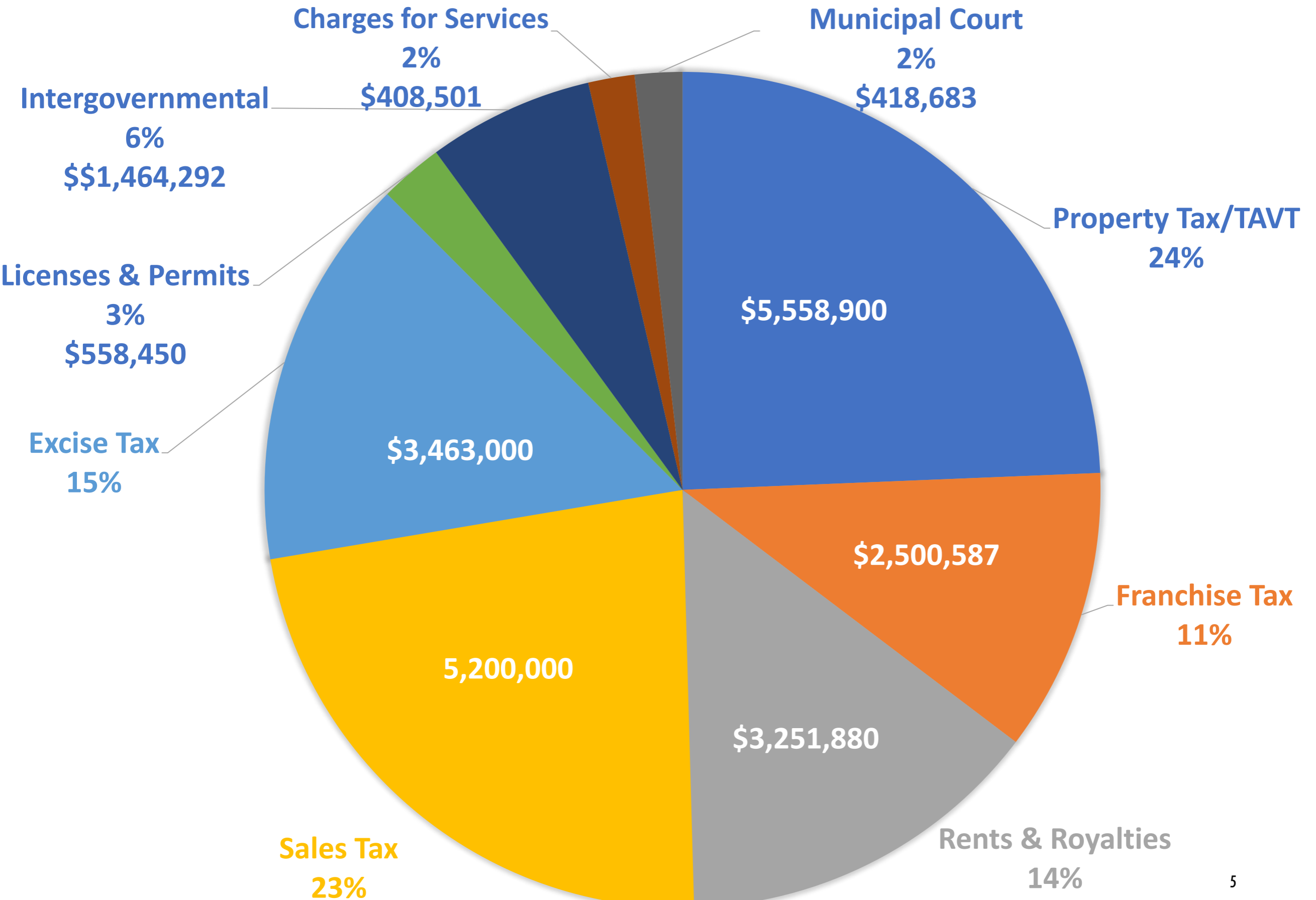
■ CAPITAL ASSETS

Aging facilities and fleet replacement requirements

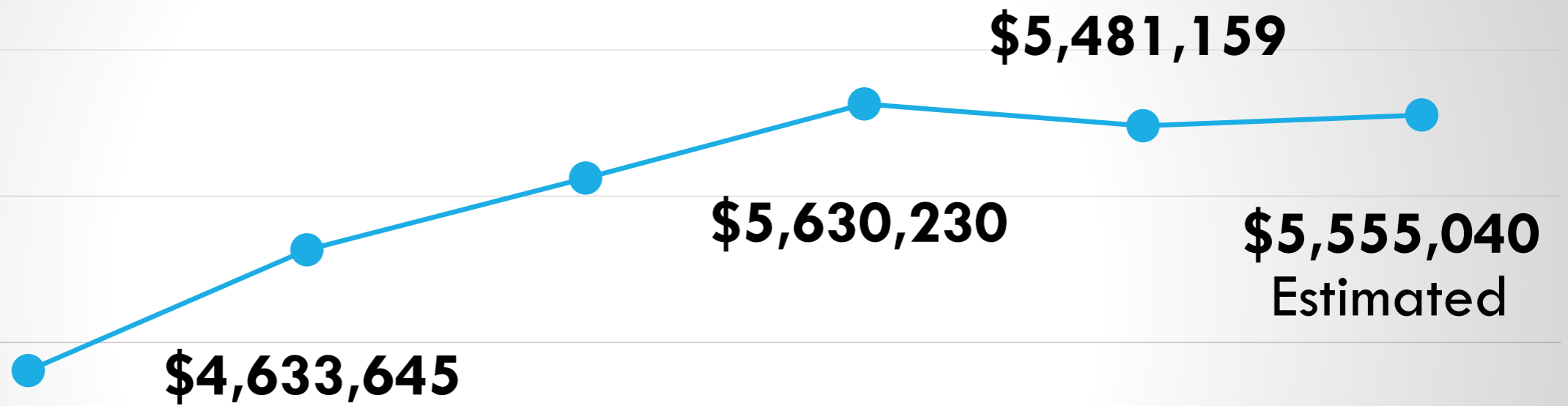
Gordon County Unemployment Rate



Total 2027 Revenues By Fund



SALES TAX TRENDS



FY2021

FY2022

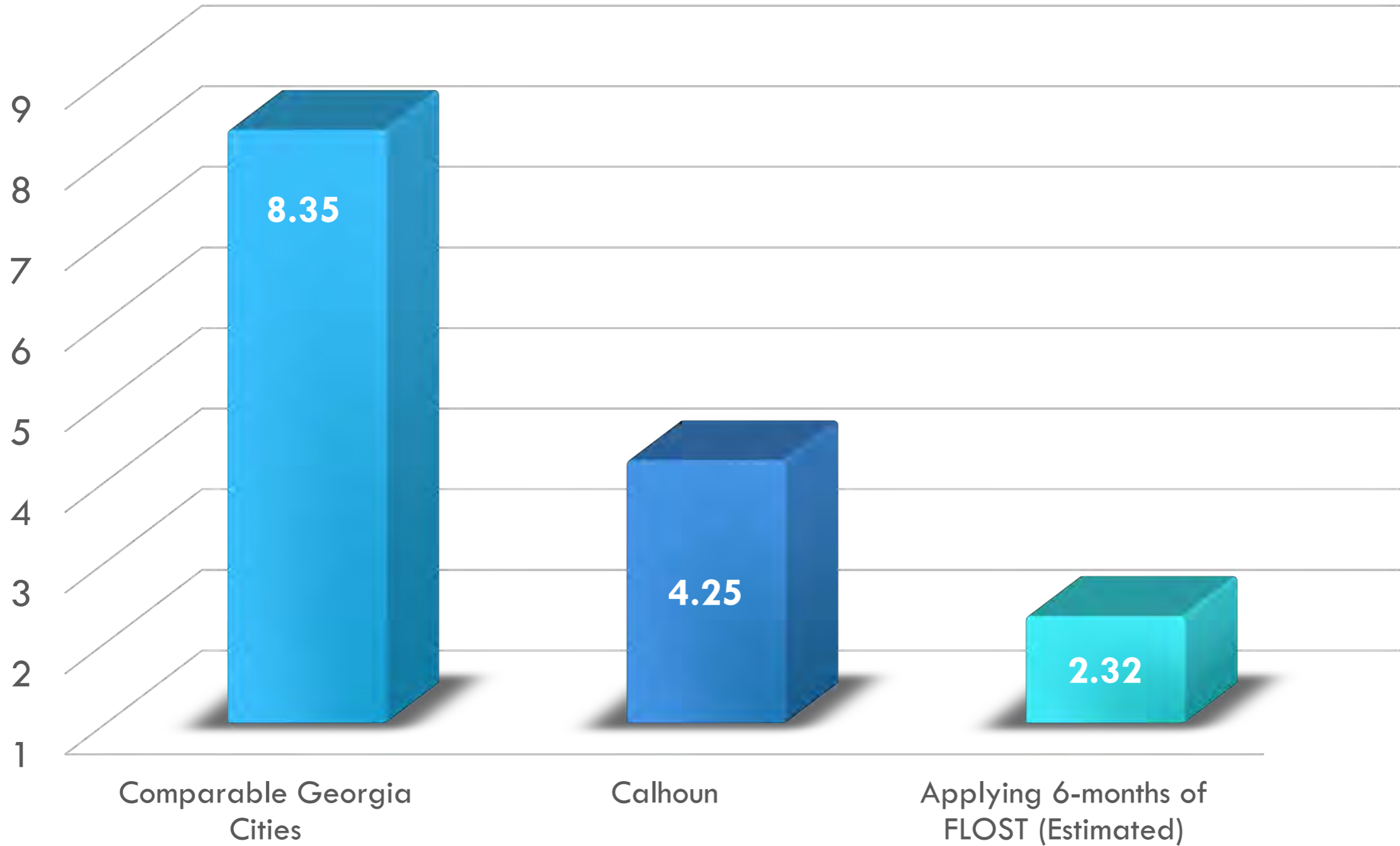
FY2023

FY2024

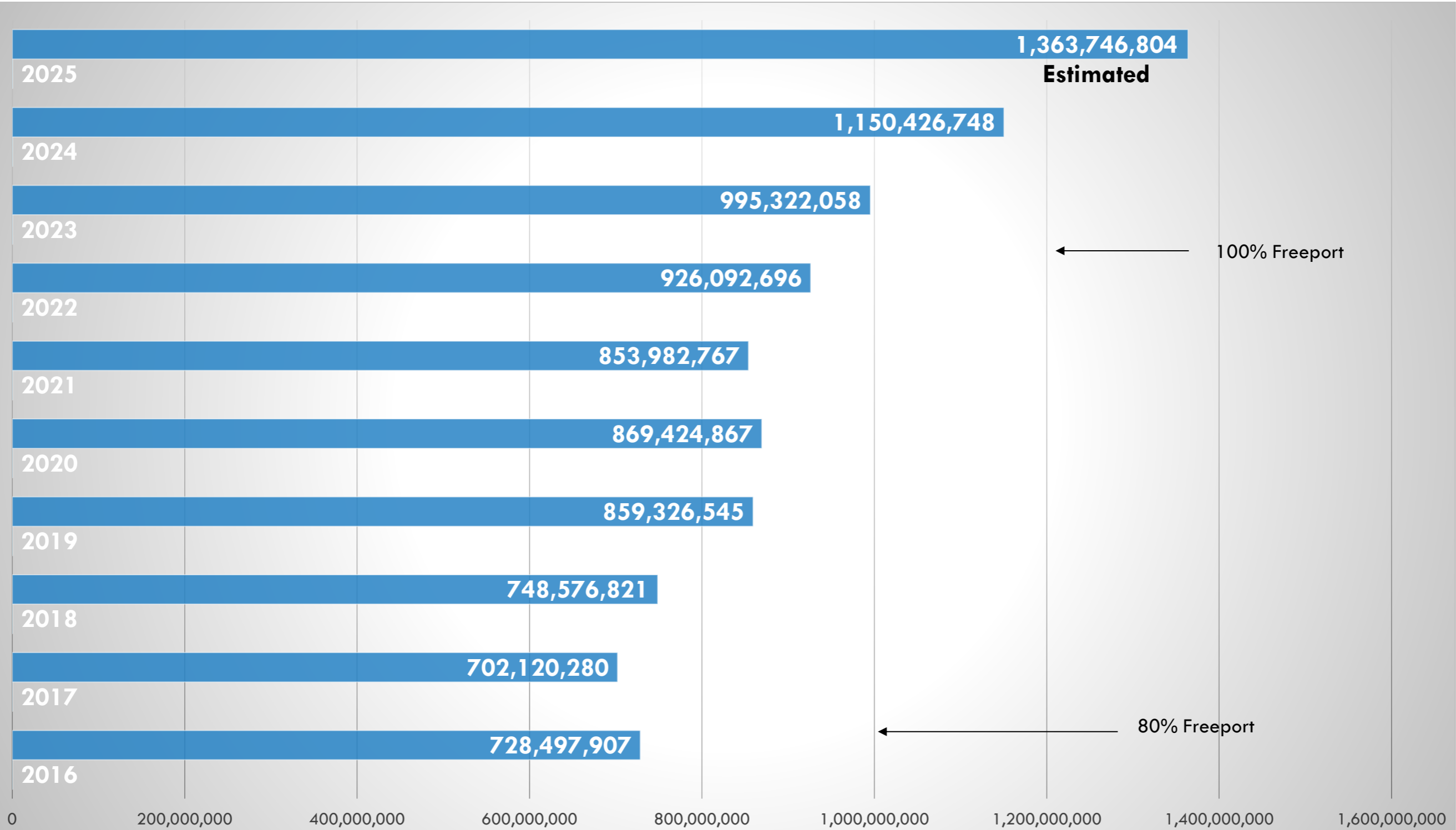
FY2025

FY2026

Millage Rate-Impact of 6-Months FLOST



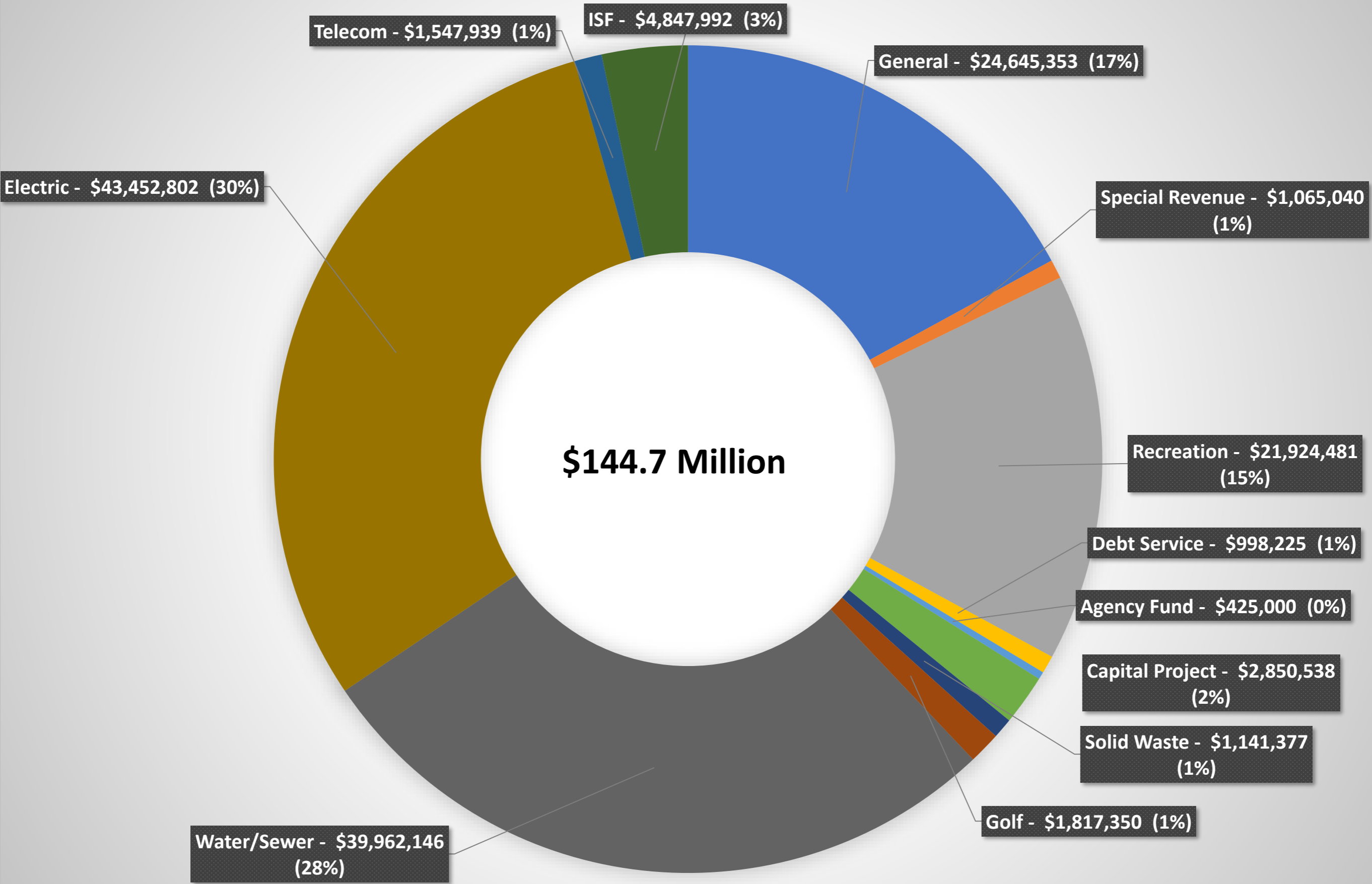
Yearly Net Tax Digest



Freeport

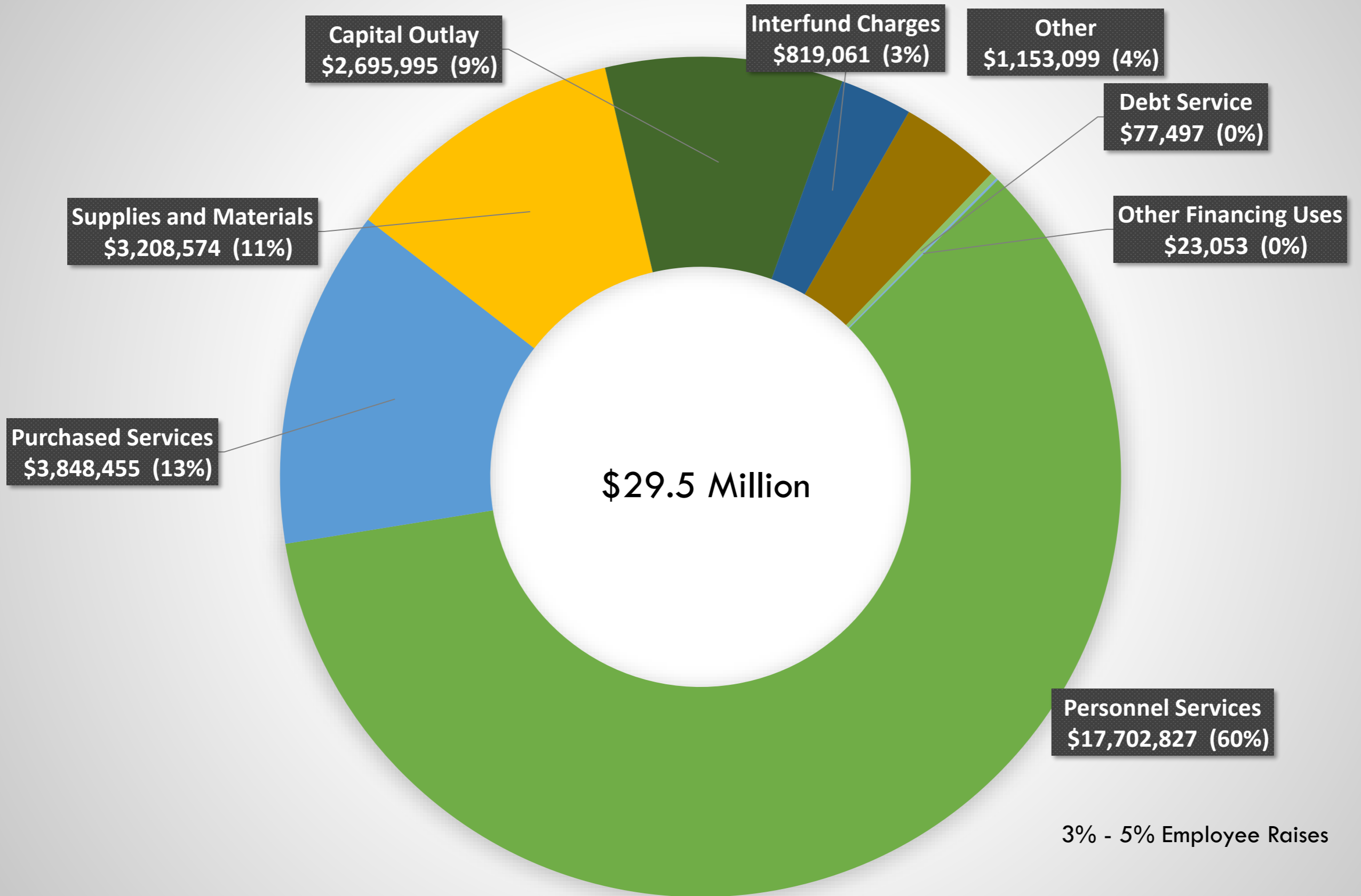
2013 – 20% 2014 – 40% 2015 – 60% 2016 – 80% 2021 – 100%

Total 2027 Expenses By Fund



**Excludes all transfers between funds.*

General Government 2027 Budgeted Expenditures by Type



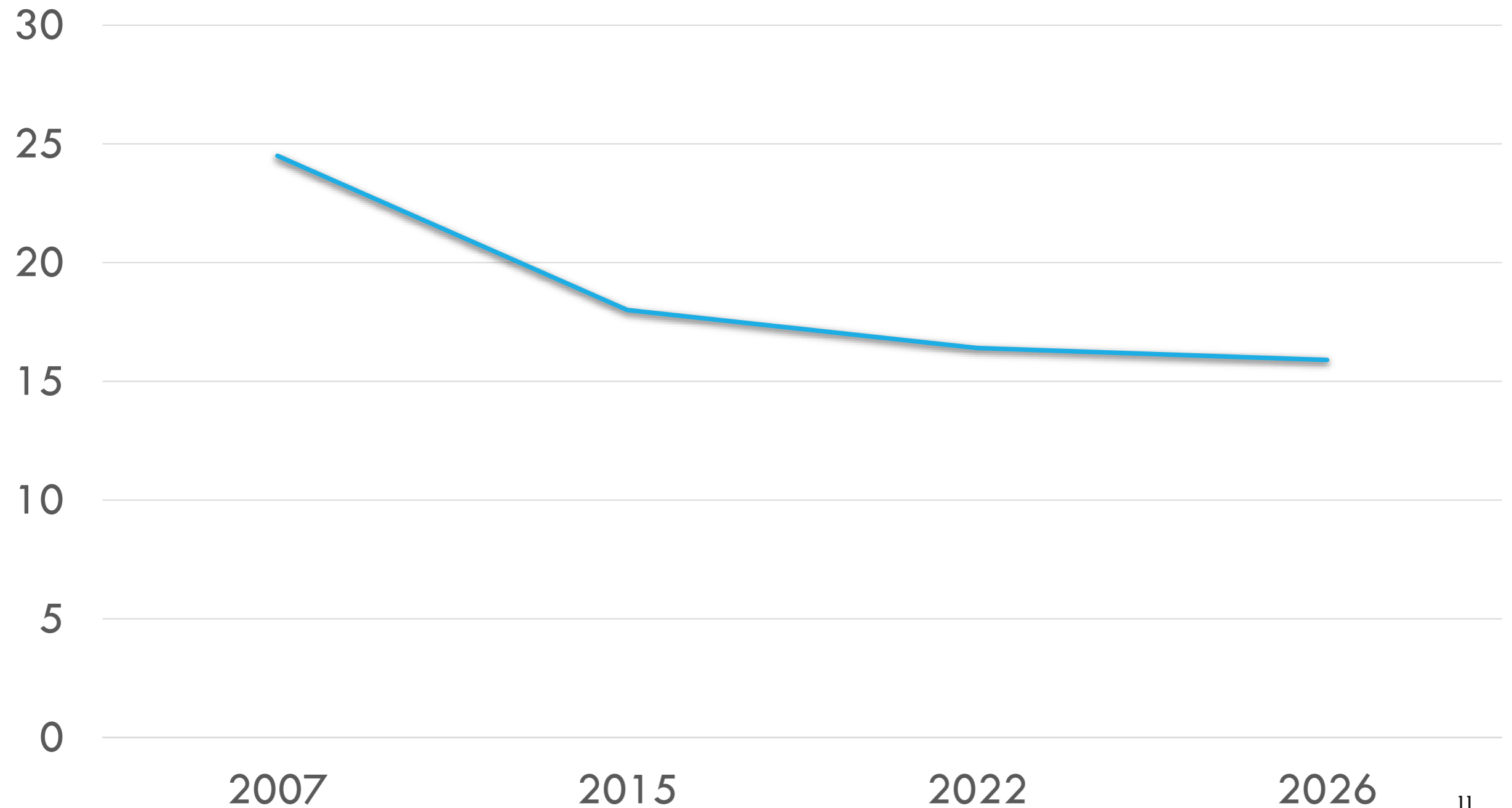
3% - 5% Employee Raises

**Excludes all transfers between funds*

***Excludes the Recreation Center construction of \$20 million in Capital Outlay*

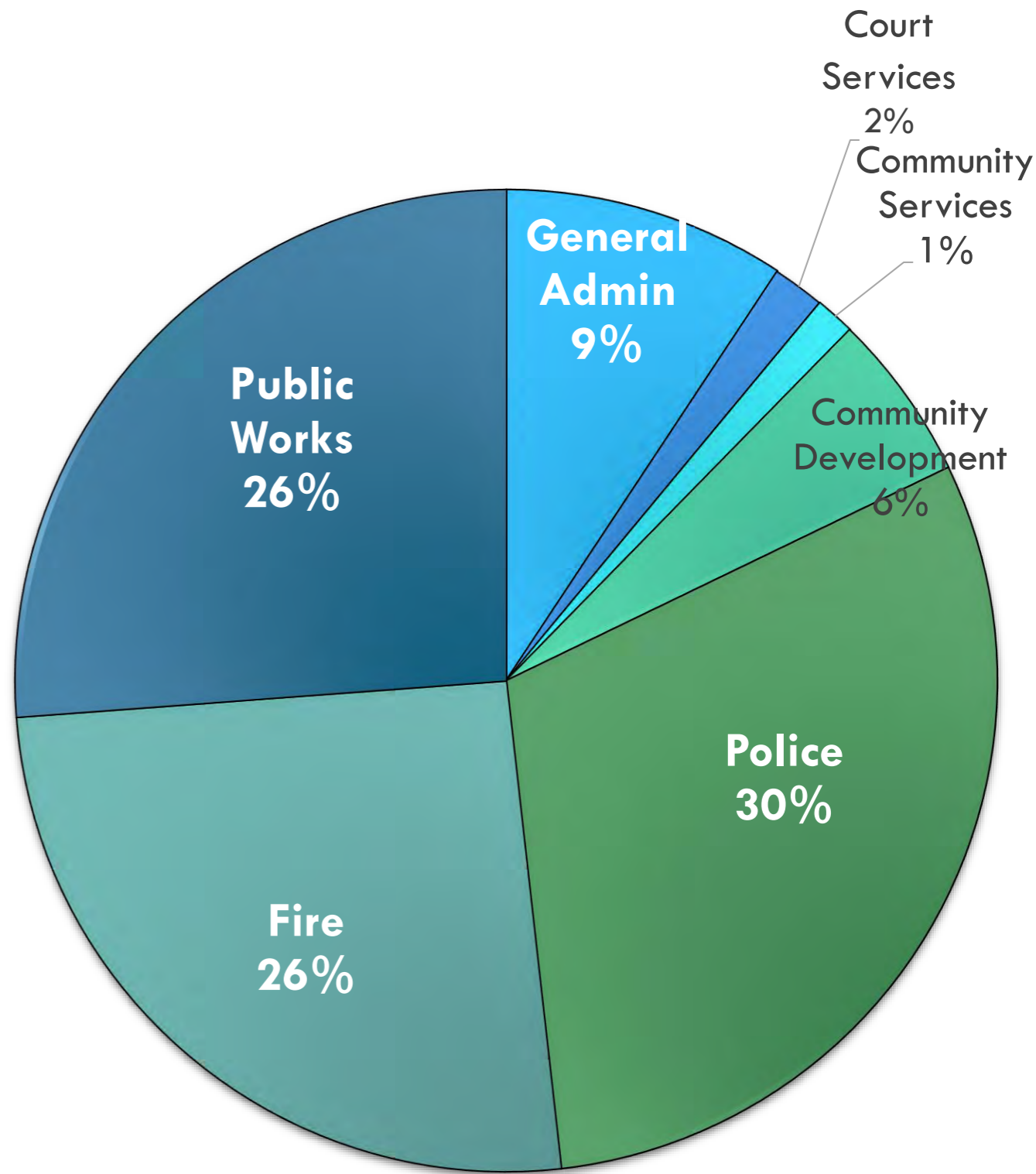
Municipal Employees per 1,000 Residents

Employee staffing levels relative to population growth, 2007-2026



Budgeted Expenses

General Admin	\$2,277,399
Court Services	\$418,683
Community Services	\$323,963
Community Development	\$1,350,980
Police	\$7,441,412
Fire	\$6,272,462
Public Works	\$6,415,117
Total	\$24,500,016



Excludes transfers-Rec Center Project

- General Admin
- Court Services
- Community Services
- Community Development
- Police
- Fire
- Public Works
-

Revenue Funds-Proprietary Funds

Recreation
Fund:
\$21,924,481

Golf Fund:
\$1,817,350

Solid Waste
Fund:
\$1,141,377

Hotel/Motel
Fund:
\$1,000,000

2018 SPLOST PROJECTS

- Recreation Center
- Peters Street phase 3

2024 SPLOST PROJECTS

- Recreation Center
- Curtis Pkwy improvements
- Fire engine equipment
- Brush Truck

Budgeted Expenses

Sewer	\$8,219,049
--------------	-------------

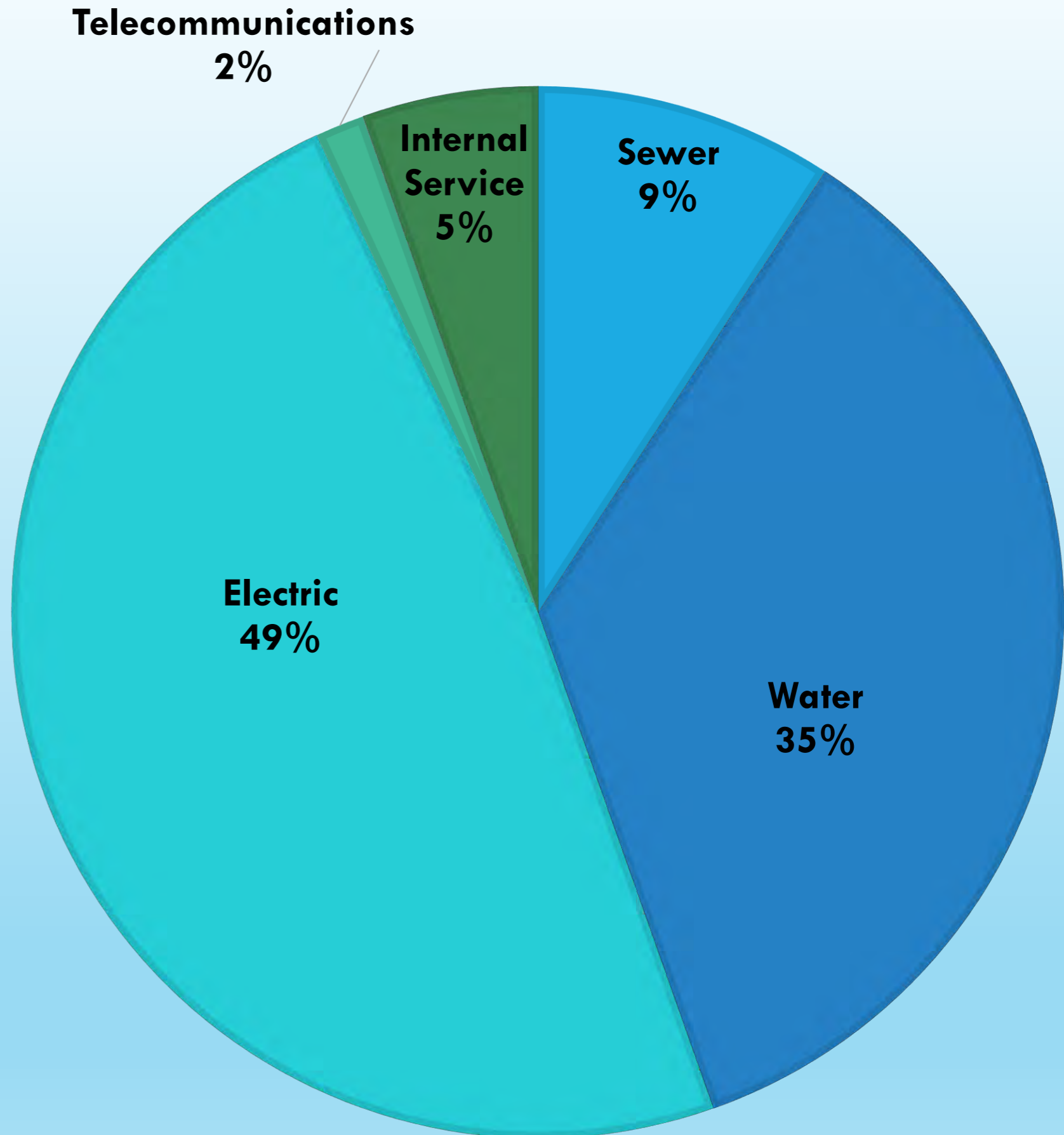
Water	\$31,743,097
--------------	--------------

Electric	\$43,452,802
-----------------	--------------

Telecom	\$1,336,609
----------------	-------------

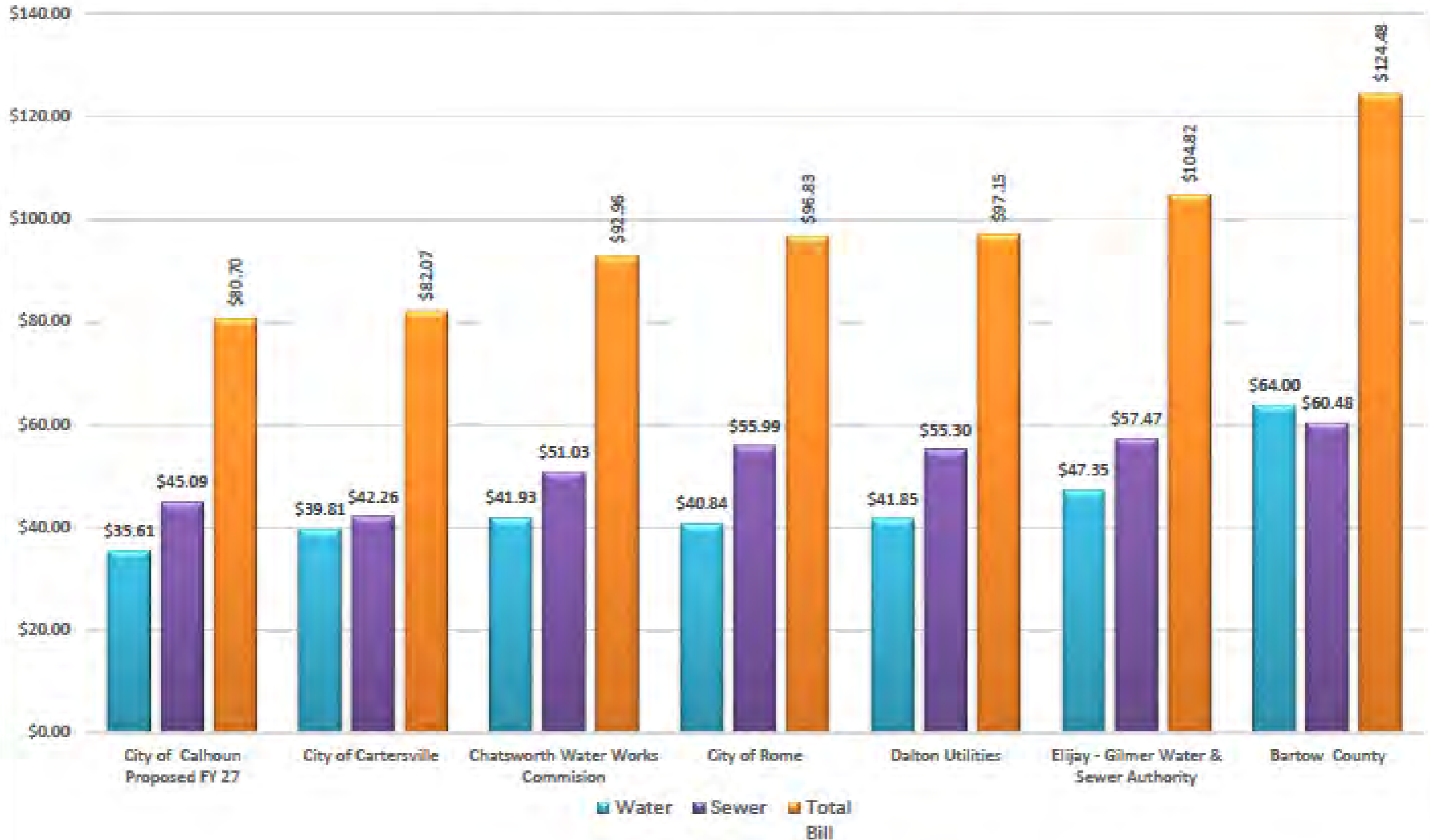
Internal Service	\$4,847,992
-------------------------	-------------

Total	\$89,599,549
--------------	--------------

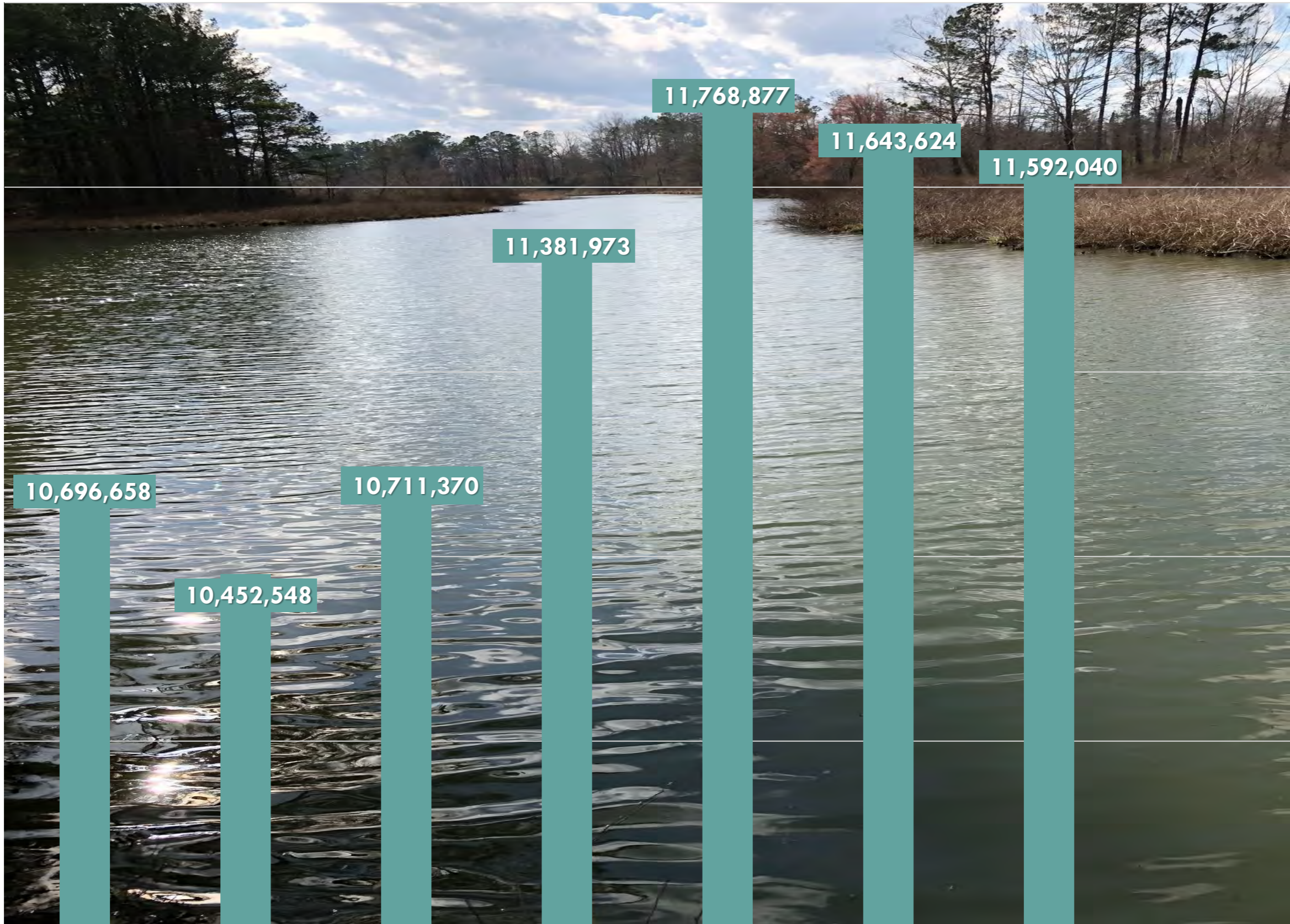


5% Water/Sewer Rate Increase

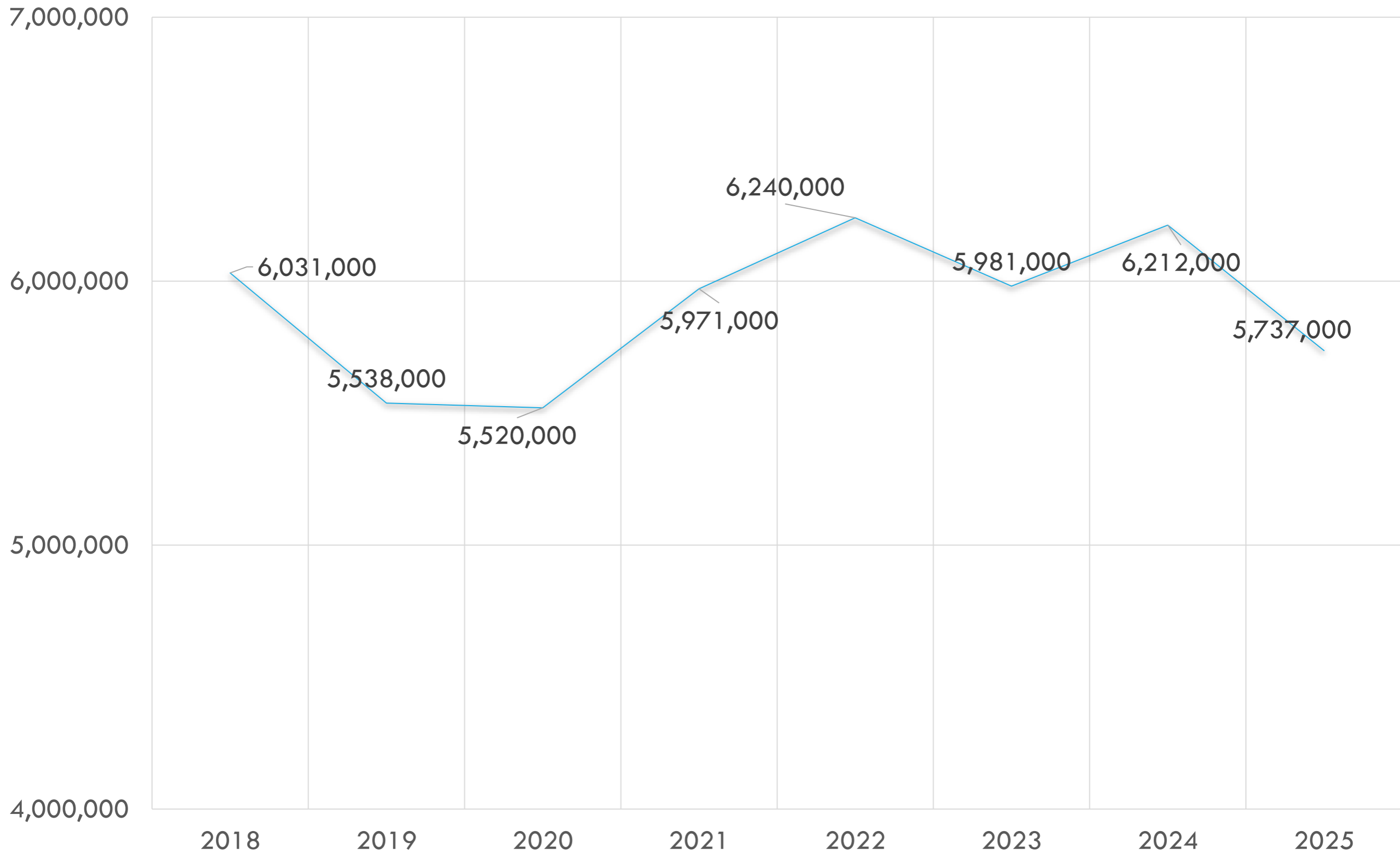
City of Calhoun Utilities
FY26-27 Rate Comparison
Residential Customers (7,000 Gal/Mth)
Inside Rates With Minimums Included

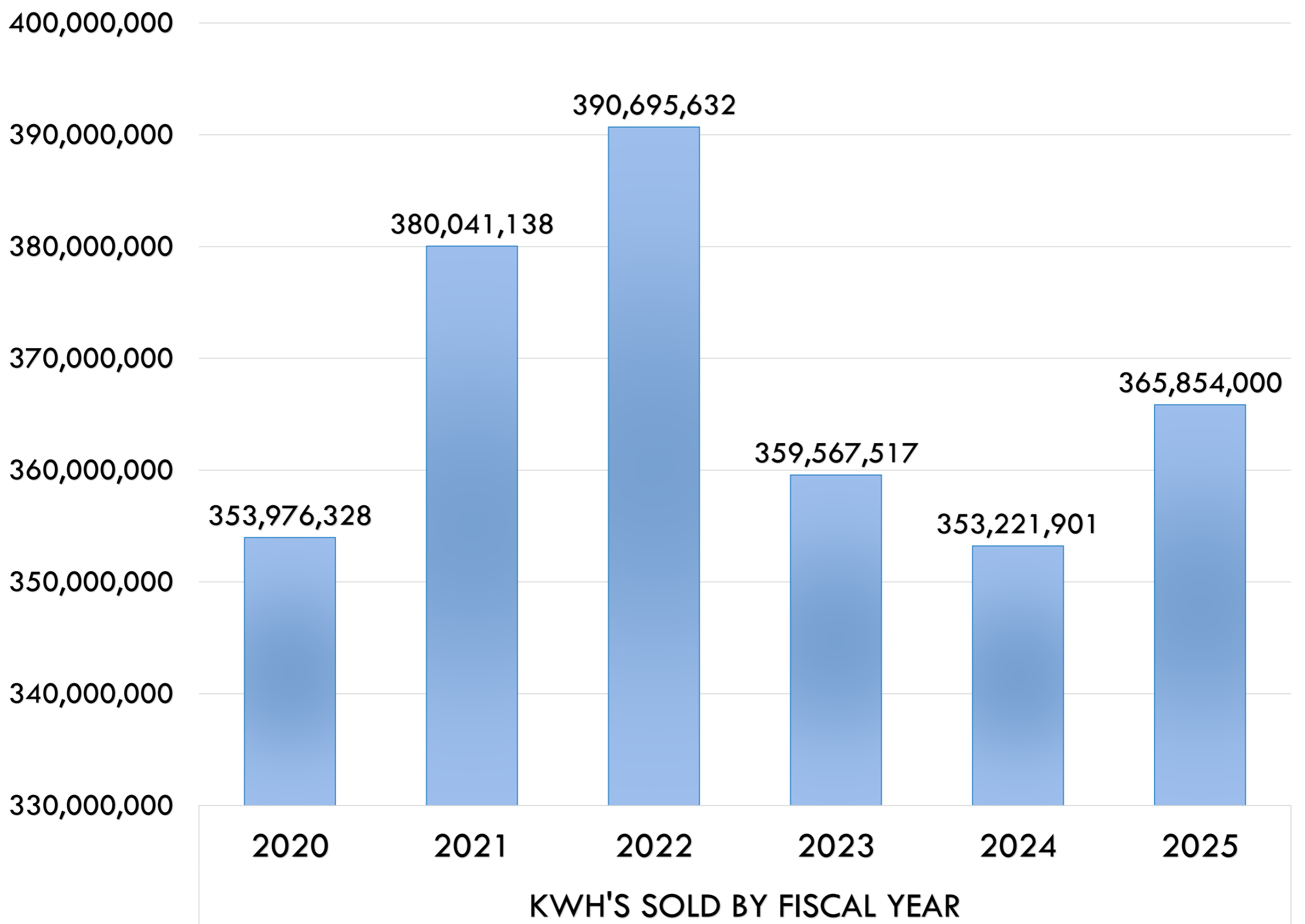


Water Treatment Daily Flow

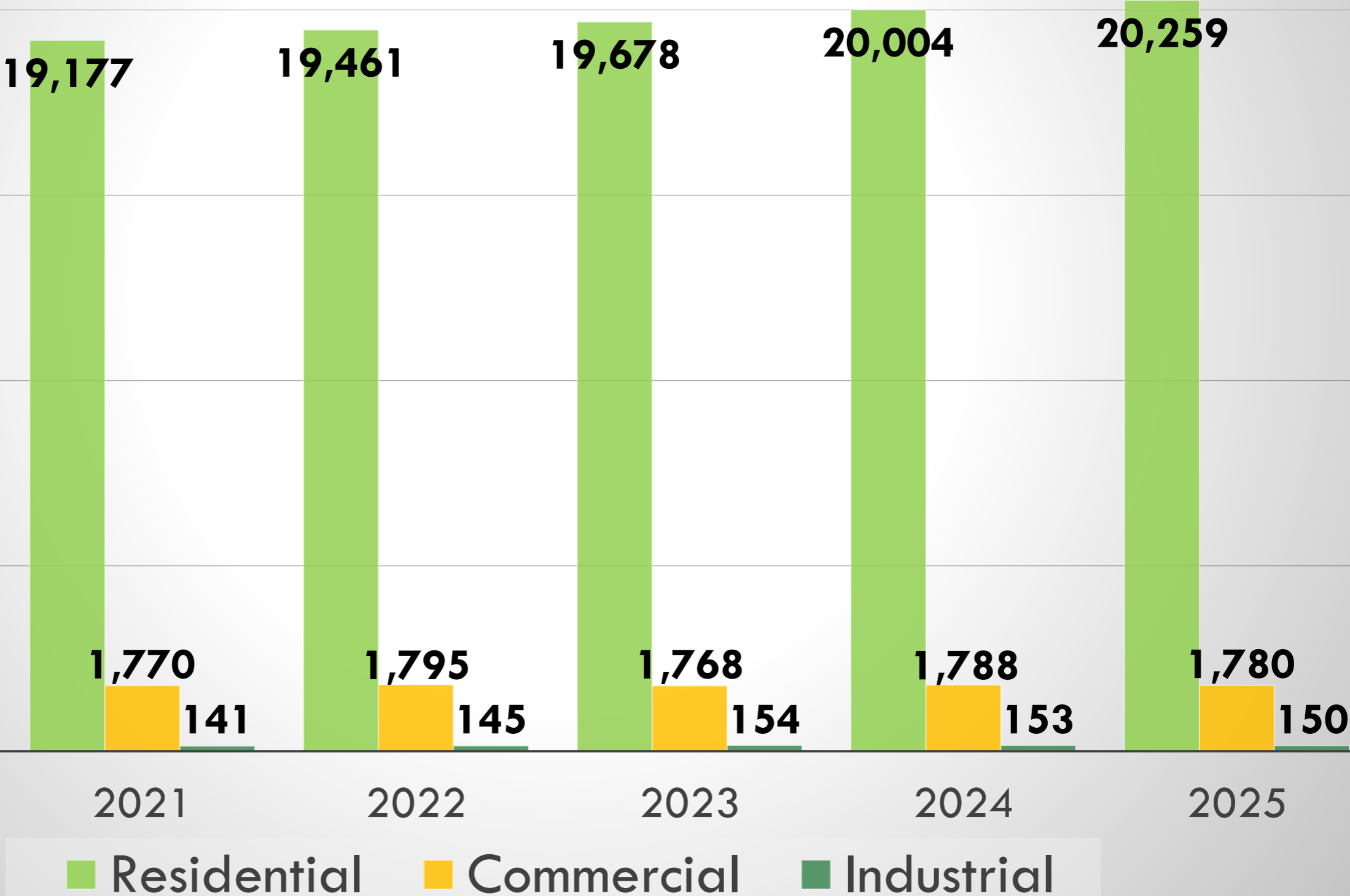


Waste Water Treatment Daily Flow



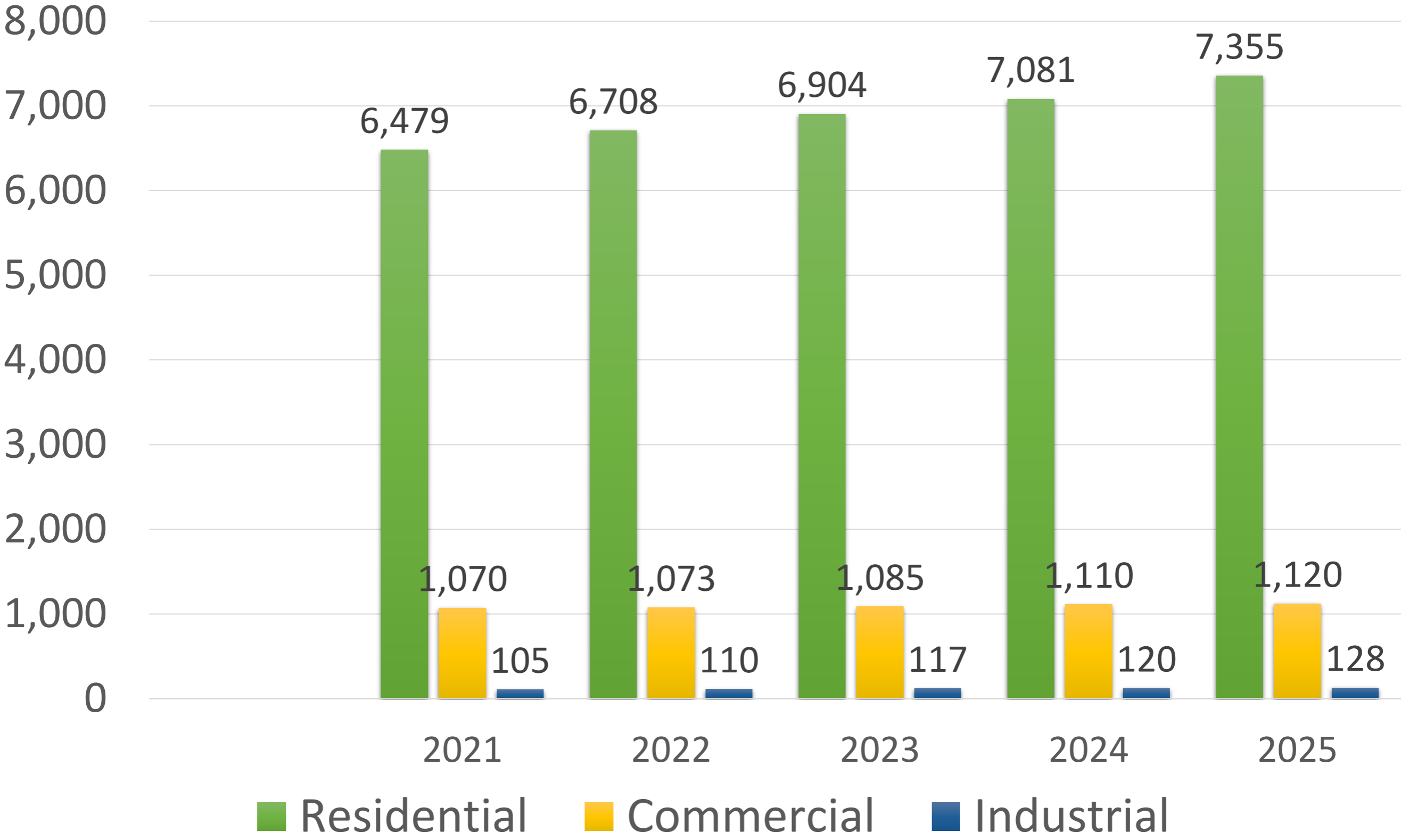


Water Active Accounts by Category

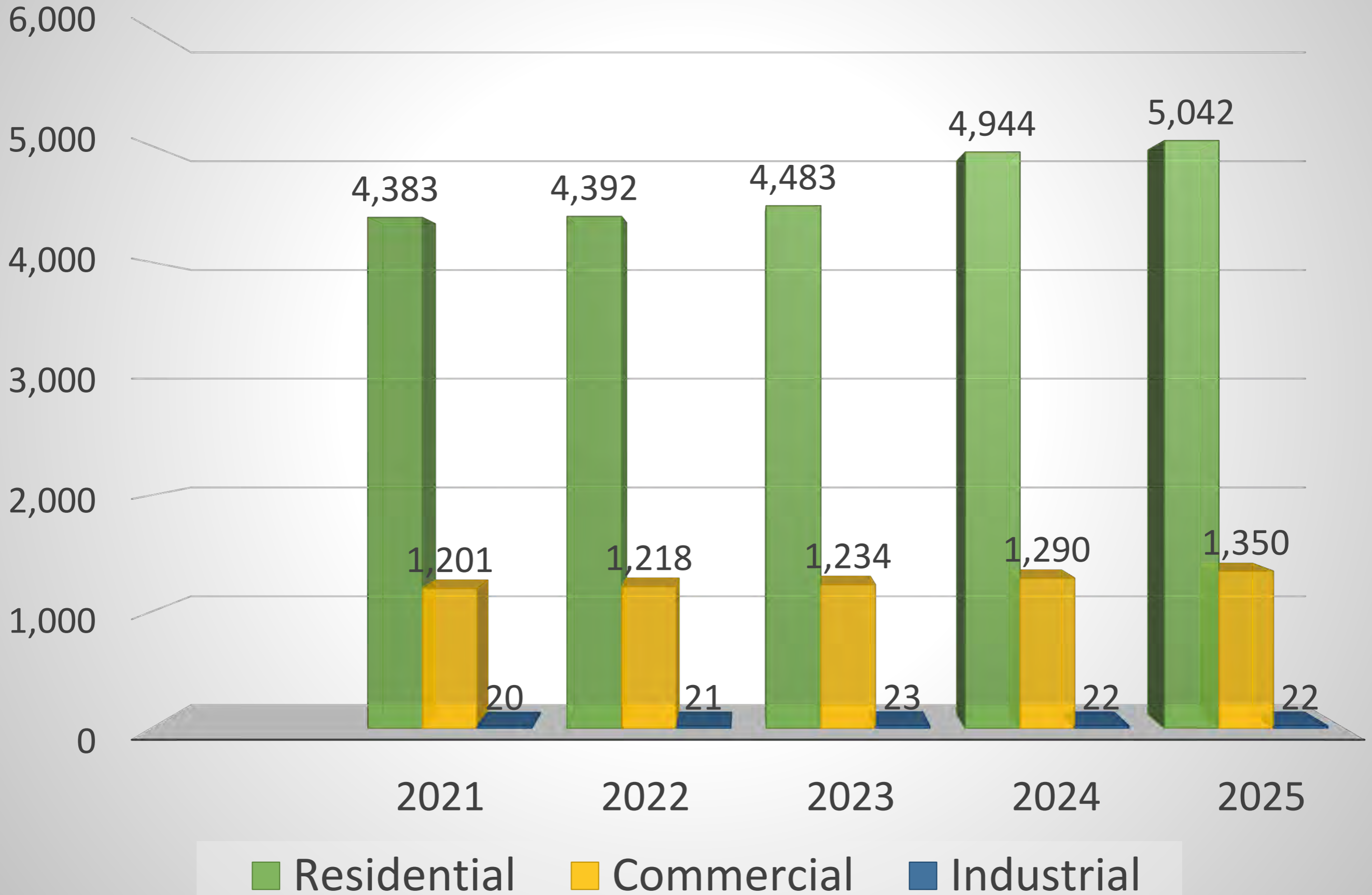


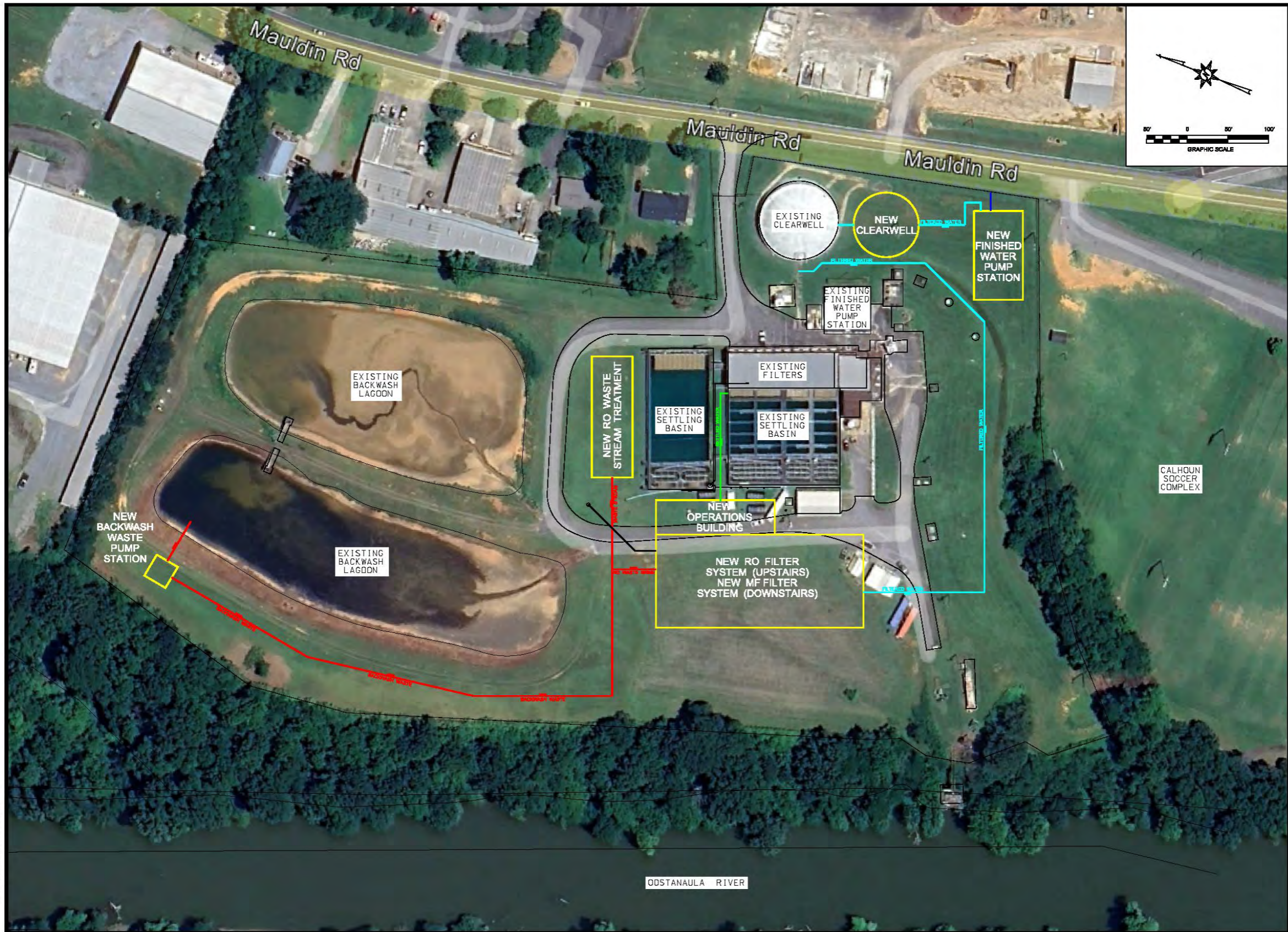
Sewer

Active Accounts by Category



ELECTRIC ACTIVE ACCOUNTS BY CATEGORY





INSITE ENGINEERING, LLC
 5800 FELDSPAR WAY
 HOOVER, ALABAMA 36044
 OFFICE (205) 733-9238
 www.insiteengineering.org


INSITE ENGINEERING
 HOOPER | TUSCALOOSA
 5800 FELDSPAR WAY
 HOOPER, ALABAMA 36044
 OFFICE (205) 733-9238
 www.insiteengineering.org
 CIVIL / GIS
 INFRASTRUCTURE
 ENVIRONMENTAL
 PLANNING
 COMMERCIAL
 RESIDENTIAL

CONSTRUCTION PLANS FOR:
**MAULDIN ROAD WTP
 PFAS REDUCTION
 IMPROVEMENTS**
 THE CITY OF CALHOUN, GA



PROJECT INFO:
 INSITE JOB No. 28080.00
 PLOTTED: 5/18/25

PRELIMINARY ENGINEERING DRAWING
 (NOT FOR CONSTRUCTION)

THIS SHEET CONTAINS:
OVERALL PROJECT SITE PLAN

SCALE: 1" = 50'
 SHEET X OF X

OV-1

Mauldin Rd Water Treatment Preliminary Plant Design

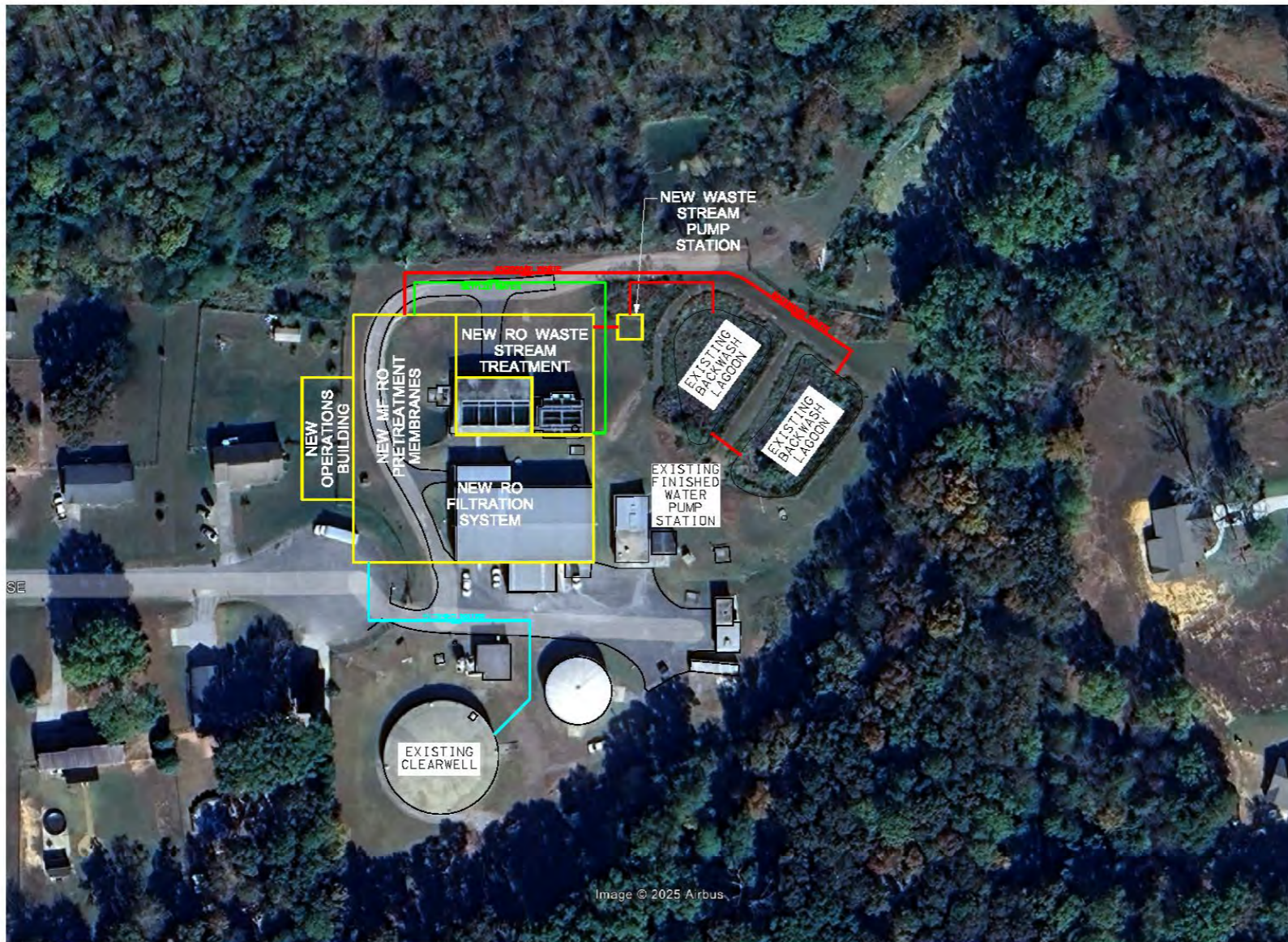
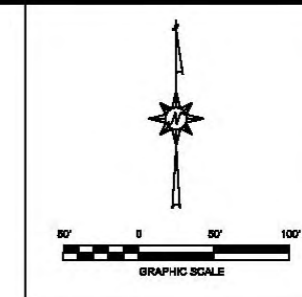


Image © 2025 Airbus



INSITE ENGINEERING
 HOOPER | TUSCALOOSA
 5800 FELDSPAR WAY
 HOOPER, ALABAMA 36244
 OFFICE (205) 733-9696
 www.insiteengineering.org

CIVIL / GIS
 INFRASTRUCTURE
 ENVIRONMENTAL
 PLANNING
 COMMERCIAL
 RESIDENTIAL

CONSTRUCTION PLANS FOR:
**BRITTANY DRIVE WTP
 PFAS REDUCTION
 IMPROVEMENTS**
 THE CITY OF CLAHOUN, GA



PROJECT INFO:
 INSITE JOB No. 26061.00
 PLOTTED: 4/30/25

**PRELIMINARY
 ENGINEERING
 DRAWING**
 (NOT FOR CONSTRUCTION)

THIS SHEET CONTAINS:
 OVERALL PROJECT
 SITE PLAN

SCALE: 1" = 50'
 SHEET X OF X

OV-1

INSITE ENGINEERING, LLC
 5800 FELDSPAR WAY
 HOOPER, ALABAMA 36244
 (205) 733-9696
 www.insiteengineering.org

Brittany Drive Water Treatment Preliminary Plant Design



Fire Tower Tank



Flashover Photography

CALHOUN UTILITIES







